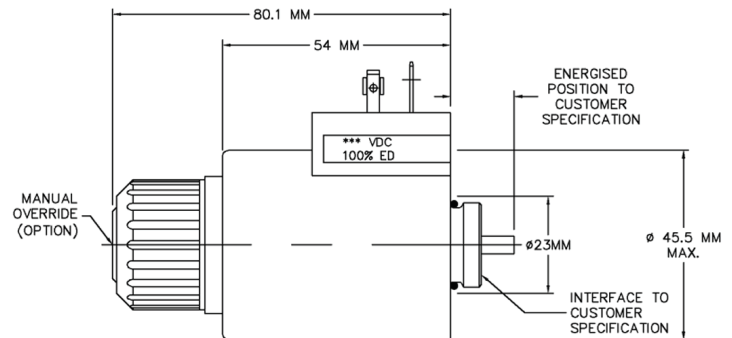
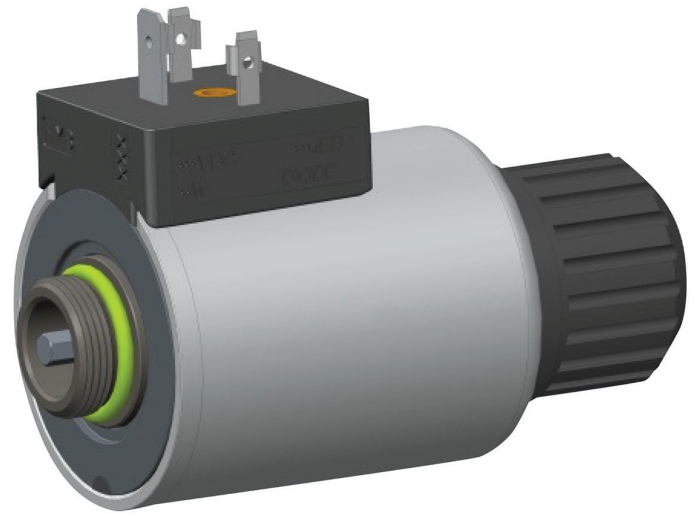


INDUSTRIAL SOLENOIDS

ON/OFF DC D15 - NG06 DC | PRODUCT DETAIL

Specification	Value
Voltages	12-24 VDC
Power Consumption	18 Watt, 30 Watt, 38 Watt, 44 Watt
Duty Cycle	S1 100% E.D.
Ambient Temperature	-20°C to +50°C
Winding Insulation	Class H
Electrical Connections	ISO4400, DEUTSCH, AMP JT, LEAD
Pressure Rating	210 Bar NFPA T2.6.I R2-2000
Vibration Resistance	24 Hrs, @ 20g @ 50-600Hz
Surge Suppression Options	Uni-Diode, Bi-Diode
Mechanical Stroke	Various Working, >7mm Total
Ingress Protection	IP66 (EN-60529) (Limited by Connector)
Corrosion Protection	FeZnNi8, 480Hrs ASTM B117 (Plated Surfaces)

Other Features/Options	
Voltages	On Request
Power	On Request
Override Function	With/Without
Seal Materials	NBR, FKM, HNBR
Corrosion Protection	FeZnNi, E-Coat
Push Rod	Removable Hex
Other Connectors	On Leadwires



ISO 4400 / DIN 43650



DEUTSCH DT04



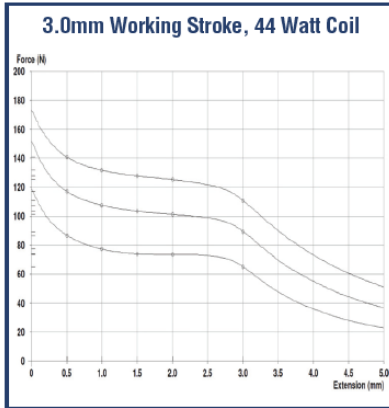
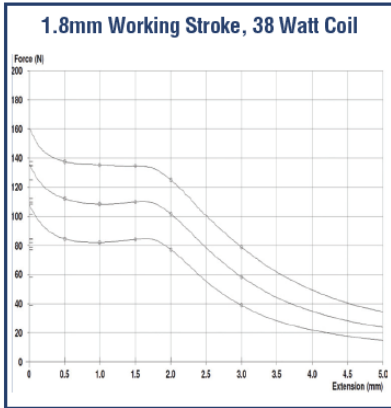
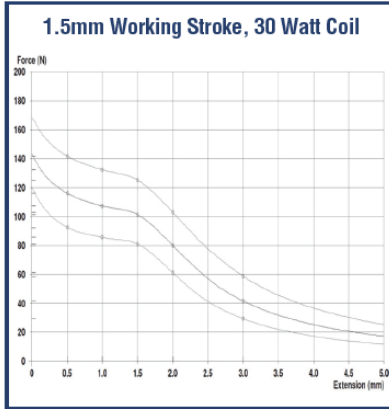
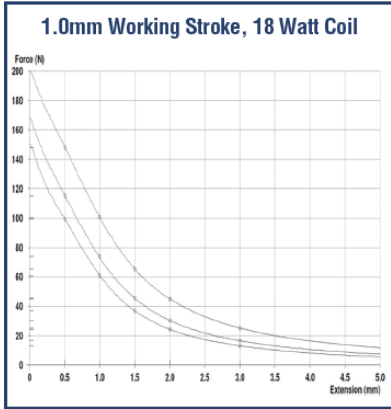
AMP JUNIOR TIMER



LEADWIRE



On/Off DC Industrial Solenoid D15 - NG06 DC



Standard Solenoid Specification

Performance Curves:

- 25°C, 100%VDC
- 50°C, 90%VDC
- Hot 90%VDC (In 25°C Ambient)



ABOUT US

We are a global leader in the design and manufacture of engineered solenoids, solenoid valves, sensors, flame arrestors and intelligent integrated sub-systems. We provide engineered solutions and capabilities to hundreds of customers in diverse markets throughout the world including aerospace, defense, on highway, off highway, and oil & gas. Celebrating 110 years of unparalleled quality and commitment to our customers.

Follow Us: 