

# CompAct Technology

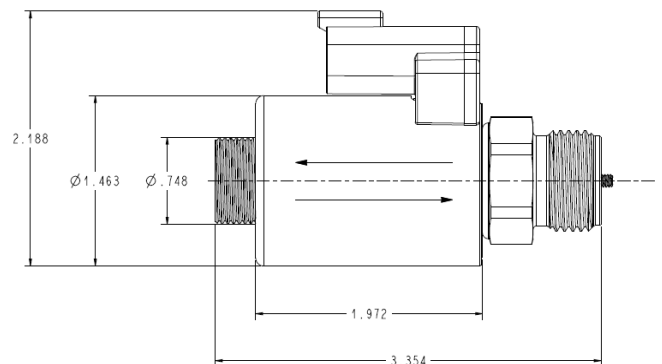
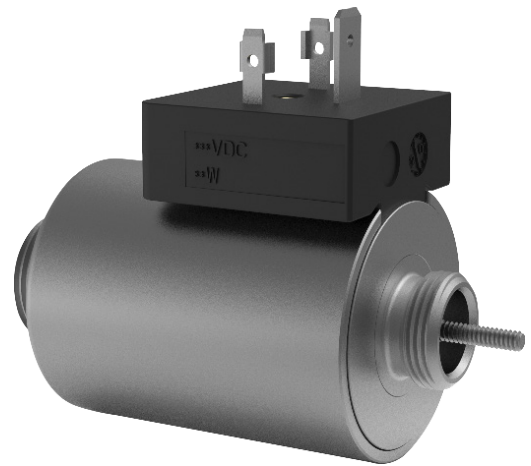
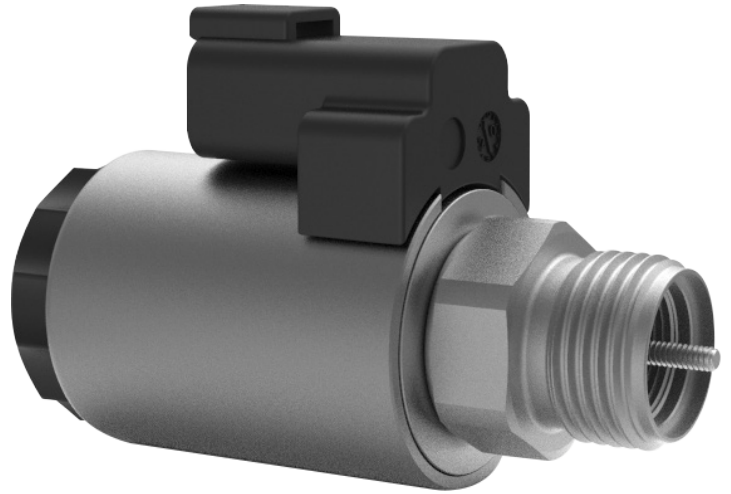
## PRODUCT DETAIL | 37mm Series

### Description

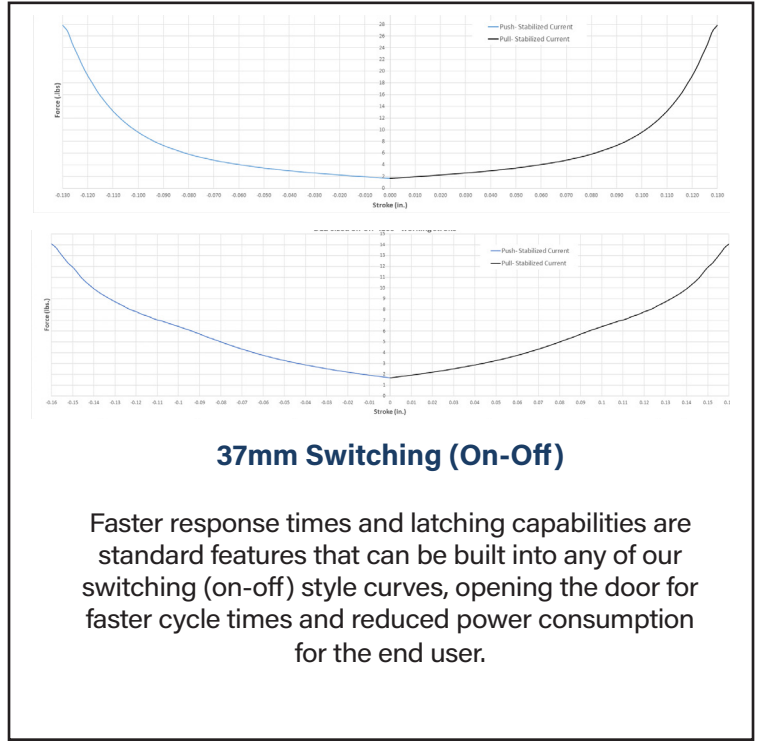
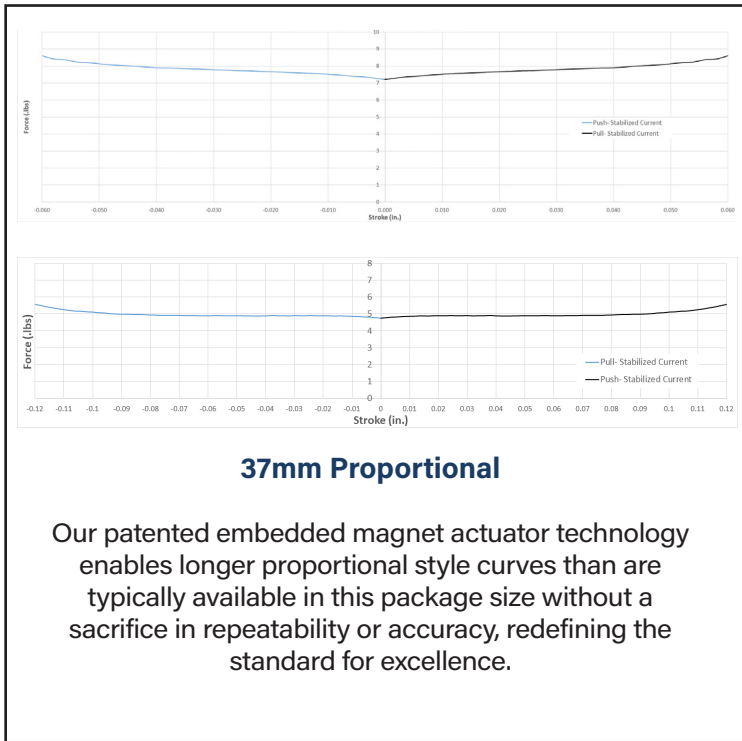
Lisk's CompAct Technology is a patent pending bidirectional embedded magnet actuator that enables reduced system footprint, faster response times, longer working strokes, and optimized energy efficiency. The 37mm series includes the following features:

- Customizable Interface
- Removable Coil
- Proportional and Switching (on-off) Available

<i>Unit</i>	<i>Specification</i>
Voltages	12 VDC, 24 VDC, Per Customer Request
Input Voltage Tolerance	-15% / +10%
Power Consumption	26 Watt (as shown), Per Customer Request
Duty Cycle	Continuous 100%
Ambient Temperature	-40°C to Per Customer Request
Winding Insulation	Class K- 200°C
Electrical Connections	DIN ISO 4400, DEUTSCH DT04-2P, Leadwire
Pressure Rating	345Bar NFPA T2.6.1 R2-2000 10 <sup>7</sup> Cycles
Surge Suppression Options	Bi-Directional Diode
Mechanical Stroke	Various Working, Max .300" Total
Ingression Protection	IP67, IP69K (Limited by Connector)
Corrosion Protection	Up to 1000Hrs Per ASTM B117
Fluid Capability	Hydraulic Oils, Skydrol
Seal Materials	NBR, FKM, HNBR, EPDM, Per Customers Request
Push Rod	Fixed, Other Connections on Request
Response Time	2-10 mS



## EXAMPLE FORCE VS. STROKE CAPABILITIES



Curves shown are just a few examples of what is possible, contact us for a solution designed for your specific application.



### ABOUT US

We are a global leader in the design and manufacture of engineered solutions including solenoids, solenoid valves, linear and rotary position sensors, motors, electric actuators and flame arrestors. We serve hundreds of customers in diverse markets throughout the world with market-leading solutions enabled by our extensive design, test and manufacturing capabilities.

