

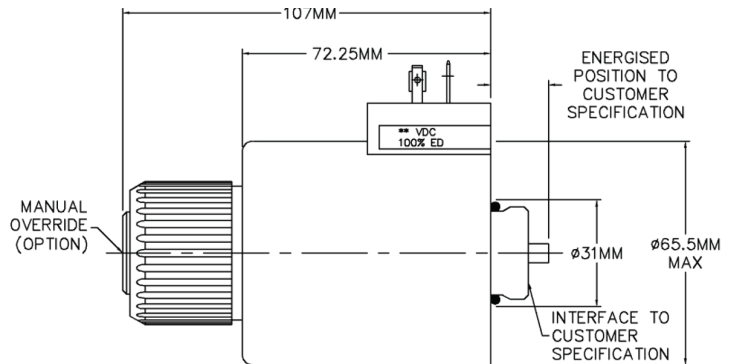
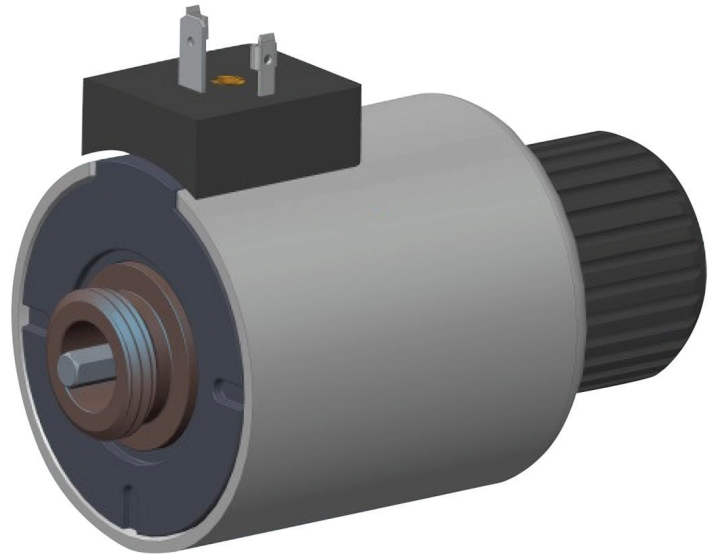
INDUSTRIAL SOLENOIDS

ON/OFF DC D19 - NG10 DC | PRODUCT DETAIL

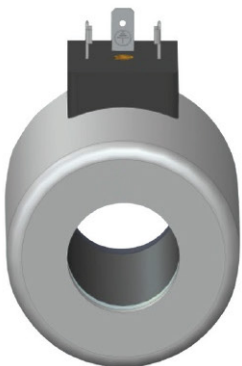
Specification	Value
Voltages	12-24 VDC
Power Consumption	38 Watt, 42 Watt, 48 Watt, 60 Watt
Duty Cycle	S1 100% E.D.
Ambient Temperature	-20°C to +50°C
Winding Insulation	Class H
Electrical Connections	ISO4400, DEUTSCH, AMP JT, LEAD
Pressure Rating	210 Bar NFPA T2.6.I R2-2000
Vibration Resistance	24 Hrs, @ 20g @ 50-600Hz
Surge Suppression Options	Uni-Diode, Bi-Diode
Mechanical Stroke	Various Working, >10mm Total
Ingress Protection	IP66 (EN-60529) (Limited by Connector)
Corrosion Protection	FeZnNi8, 480Hrs ASTM B117 (Plated Surfaces)

Other Features/Options

Voltages	On Request
Power	On Request
Override Function	With/Without
Seal Materials	NBR, FKM, HNBR
Corrosion Protection	FeZnNi, E-Coat
Push Rod	Removable Hex
Other Connectors	On Leadwires



ISO 4400 / DIN 43650



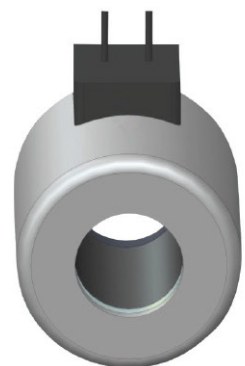
DEUTSCH DT04



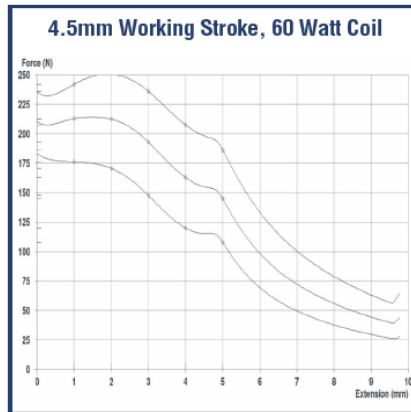
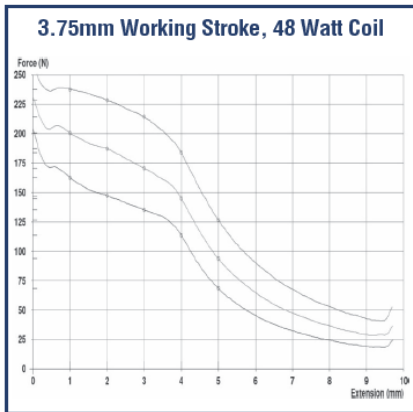
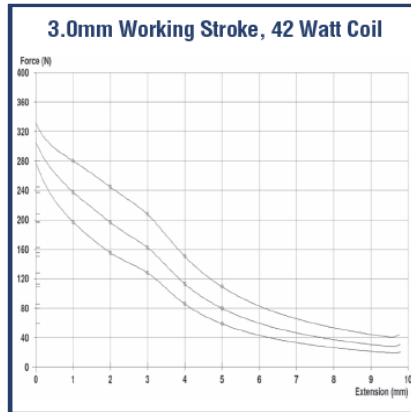
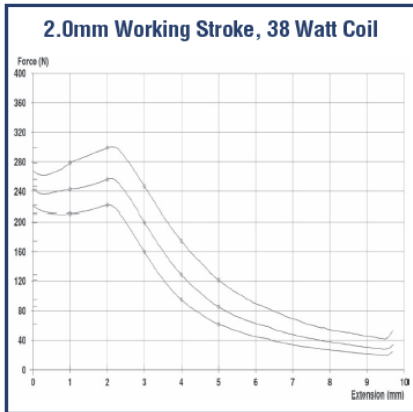
AMP JUNIOR TIMER



LEADWIRE



On/Off DC Industrial Solenoid D19 - NG10 DC



Standard Solenoid Specification

Performance Curves:

- 25°C, 100%VDC
- 50°C, 90%VDC
- Hot 90%VDC (In 25°C Ambient)



ABOUT US

We are a global leader in the design and manufacture of engineered solutions including solenoids, solenoid valves, linear and rotary position sensors, motors, electric actuators and flame arrestors. We serve hundreds of customers in diverse markets throughout the world with market-leading solutions enabled by our extensive design, test and manufacturing capabilities.

