

INTEGRATED SMART SOLUTIONS

INTEGRATED SMART SOLUTIONS | PRODUCT DETAIL

Description

Our integrated smart solutions enable closed loop control of your most important system parameters by leveraging advanced actuator and valve technologies, firmware, drive electronics, sensors and communications protocols. The values listed below are the customer requirements for a specific application.

Specification

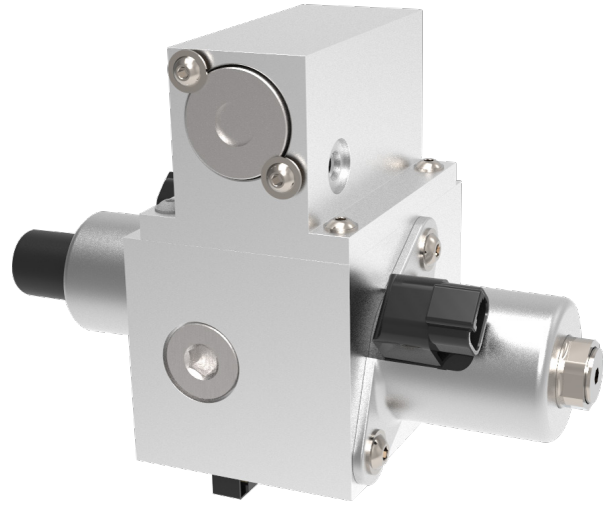
System Flow Response Time: time < 80ms @ min inlet pressure
Flow Range (Gaseous): 100:1
Flow Accuracy: ± 3 to 10% of Flow Command over Flow Range
Flow Repeatability: < $\pm 1.5\%$ Instantaneous Flow
Flow Over/Undershoot: < 2% Commanded Flow
Internal Pressure Regulation Ratio: 2.5:1
Dimensions: Width = 9.5", Height= 6", Depth= 5.5" (As Shown)

Environment

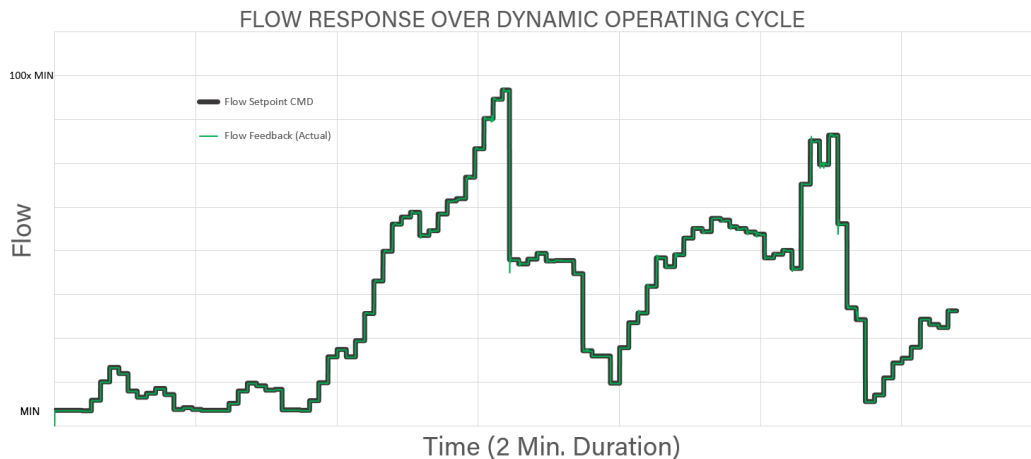
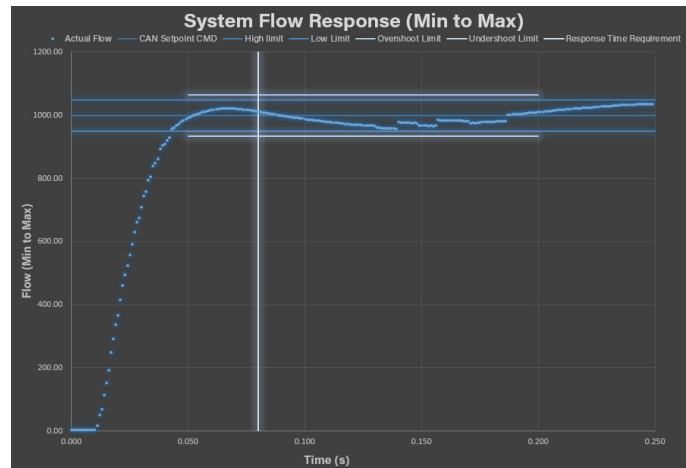
Media Temp: -40°C to 85°C
Operating Temp: -40°C to 105°C
Inlet Pressure Range: 60-150 psig
Component Proof Pressure: 300 psig
Component Burst Pressure: 600 psig

Electrical

8-34V
Nominal Operating Voltage: 12V / 24V
Peak Current Draw: <20A @12V for <100ms
Max Continuous Current: <5A



Patent Pending Technology





LISK provides control valve solutions for the medium and heavy duty engines of global OEM's. Our emission control products allow our medium and heavy duty diesel engine customers meet EPA, Euro, and PNLT regulations. Our On/Off Highway Engine Valve Group includes:

- **DPF Hydrocarbon Dosing:** Inward and outward opening poppet designs for Mid-Range and Heavy Duty applications
- **EGR:** Poppet and Butterfly designs, Hydraulic Solenoid Actuated and Electric Motor Operated (With CAN control)
- **Natural Gas:** Fuel Control Valves, Fuel Shut-Off Valves, Fuel Pressure Regulators
- **Turbo:** Variable Geometry Control (VGT) & Waste Gate Control Valves



ABOUT US

We are a global leader in the design and manufacture of engineered solutions including solenoids, solenoid valves, linear and rotary position sensors, motors, electric actuators and flame arrestors. We serve hundreds of customers in diverse markets throughout the world with market-leading solutions enabled by our extensive design, test and manufacturing capabilities.

