

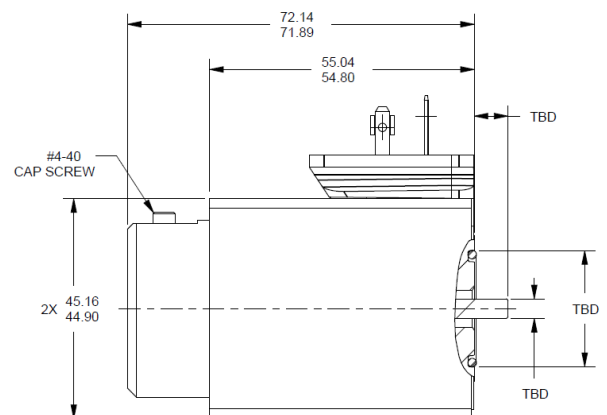
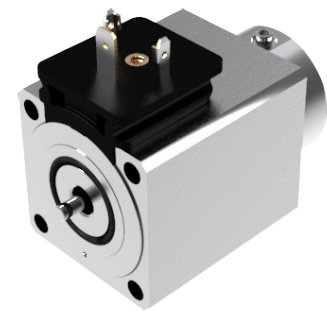
# INDUSTRIAL SOLENOIDS

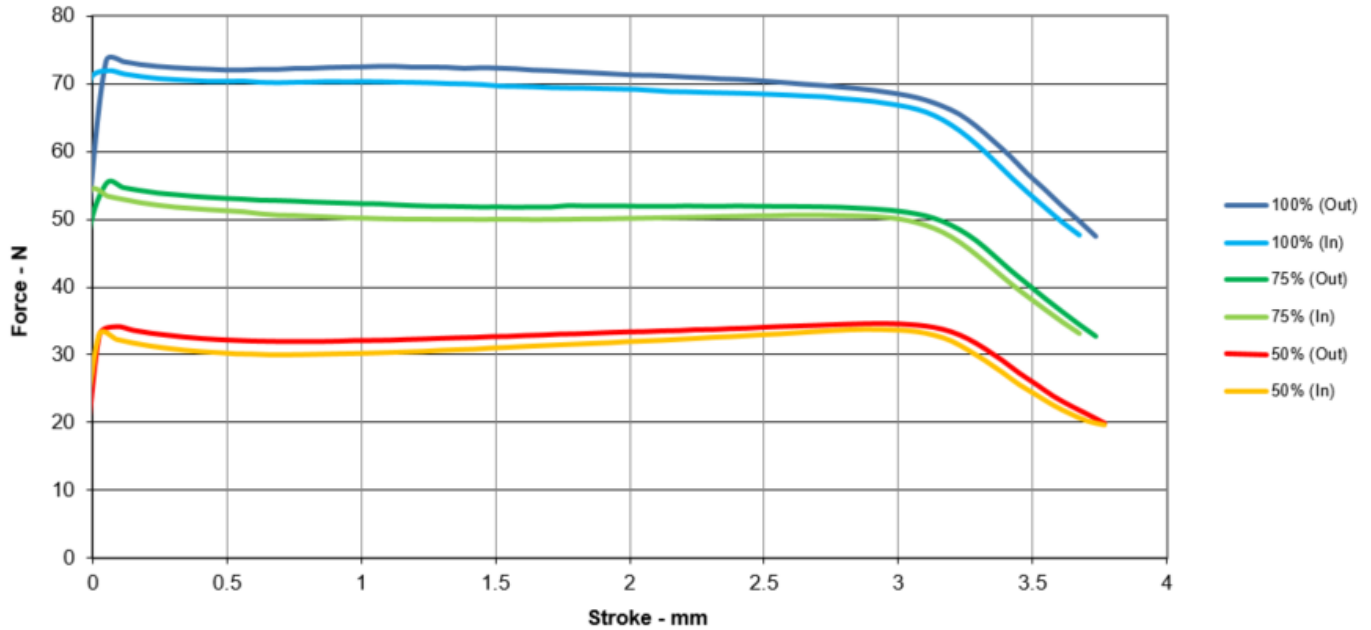
## D15 NG06 SQUARE BODY | PRODUCT DETAIL

### Description

The square body solenoid design is developed to be modular and can operate across a large range of proportional valves, particularly in the industrial markets. The square body can be utilized in harsh environments with an ingress protection rating that is limited by the connector type.

<i>Specification</i>	<i>Value</i>
Voltages	12 VDC, 24 VDC, Per Customer Request
Duty Cycle	Continuous 100%
Power	30 Watts Max with 100% Continuous Duty Cycle
Ambient Temperature	-40°C to 70°C, Per Customer Request
Winding Insulation	200 °C
Electrical Connections	ISO 4400, DEUTSCH
Pressure Rating	345 Bar NFPA T2.6.1 R2-2000
Working Stroke	3.0mm
Total Stroke	Per Customer Request
Ingress Protection	Up to IP67, IP69K (Limited by Connector)
Corrosion Protection	Zinc Trivalent, 120 Hrs ASTM B117
Override Function	Manual Override, Threaded Interface, Per Customer Request
Seal Materials	Per Customer Request
Push Rod	Fixed
Hysteresis	<3%





### ABOUT US

We are a global leader in the design and manufacture of engineered solutions including solenoids, solenoid valves, linear and rotary position sensors, motors, electric actuators and flame arrestors. We serve hundreds of customers in diverse markets throughout the world with market-leading solutions enabled by our extensive design, test and manufacturing capabilities.

